

CRACKSTITCH®

INSTALLATION INSTRUCTIONS

STEP 1: Prepare the area as needed:

- If uneven surfaces, you may need to surface grind to level the area

STEP 2: Layout your Stitches

- Lay the stitch perpendicular across the crack
- Mark a line along the length of the stitch approximately 11" long
- Space out and mark your stitches ≈ 12" apart

STEP 3: Cut the slots for stitches

- Cut a slot minimum 1/8" wide 3/4" deep at each location.
- Vacuum any remaining dust and debris from the area
- Dry fit the stitch to be sure the entire stitch is below the surface

STEP 4: Fill the slot with epoxy

STEP 5: Install Stitches

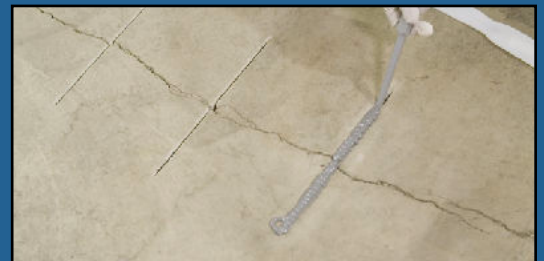
- Insert the Stitch into the slot
- Use a putty knife to fill in and smooth the surface and remove excess
- Add more epoxy if needed and finish with putty knife
- Use remaining or additional epoxy to fill in the crack
- Apply aggregate top coat if desired

STEP 6: Allow cure time before finishing surface

- Gel Time is ≈ 30 Minutes at 70 degrees Fahrenheit
- Full cure is 24 hrs at 70 degrees Fahrenheit



Scan QR code to
watch installation
video!



A Fortress Product



184 W. 64th St. Holland, MI 49423
616-355-1421 - www.FortressForLife.com